



Digital communications, coupled with TOA audio quality provides an outstanding conference system that can be adapted to fit any size room.

# DIGITAL CONFERENCE SYSTEM

TS-D1100 Series



# Professional and Passionate

A conference system amplifies the power and influence of your speech.

**NEW**

**TS-D1000-CF Chairman Unit**  
**TS-D1000-DF Delegate Unit**  
**Flush Mount Type**

Flush mount devices are ideal for use in permanent installations, creating individual participant positions.



**TS-D1000-CU Chairman Unit**  
**TS-D1000-DU Delegate Unit**  
**Desktop Type**

Conference units are designed to facilitate effective communication and collaboration in meetings. Allowing participants to speak, listen, and interact seamlessly.





# Designed for meeting facilitators



Intelligible conversations in conference or board rooms for up to 246 participants.



Long microphone option to make a room for your laptop or documents.





## Facilitator-supporting function

### Chairman's Unit Priority Function

- Chairman Unit has priority override control.
- Smooth operation of the conference is assured by a Chairman Unit's priority function.

### Setting for Number of Open Microphones

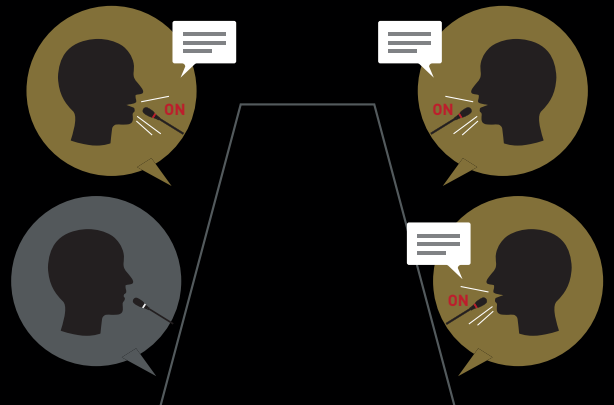
- The Chairman can select the number of delegates who speak simultaneously to guide the discussion.
- Up to eight Delegate Units for simultaneous operation is allowed and if one or two Chairman Units are included, they may speak simultaneously.

## Participant-supporting feature

### Voice Activation Mode

Start talking instead of pressing the button.

Microphone can be activated in response to a person's voice.



## Administrator-supporting feature

### Easy Maintenance

A Shielded CAT5e STP cable carries signals between conference units or between the Master Control Unit and a conference unit.



### Flush Mount Type

Microphone latch lock. Use the hex wrench M3 (accessory of TS-D1000-CF) to push into this latch lock hole to dismantle the microphone.



# Master Control Unit | Key Functions



Built-in volume control for monitor speaker.

## Operation Mode

**STANDARD** : Optimized for a meeting where the chairman assigns who will talk the next.

**OVERRIDE** : Optimized for a meeting where the participants talk in order.

**VOICE ACTIVATION** : Optimized for an open discussion (all conversations are sent to record output).

**CHAIRMAN ONLY** : Optimized for a presentation style meeting. The presenter will reach every participant clearly thanks to a built-in speaker on each unit.

## Energy Saving Mode

Conference system automatically switched off after 2 hours of inactivity.



TS-D1100-MU

## Built-in Audio Recording

Meetings can be recorded in mp3 format on USB drive or internal memory\*.

\*Internal recording up to 18 hours at 128 kbps.



## Hybrid Conference

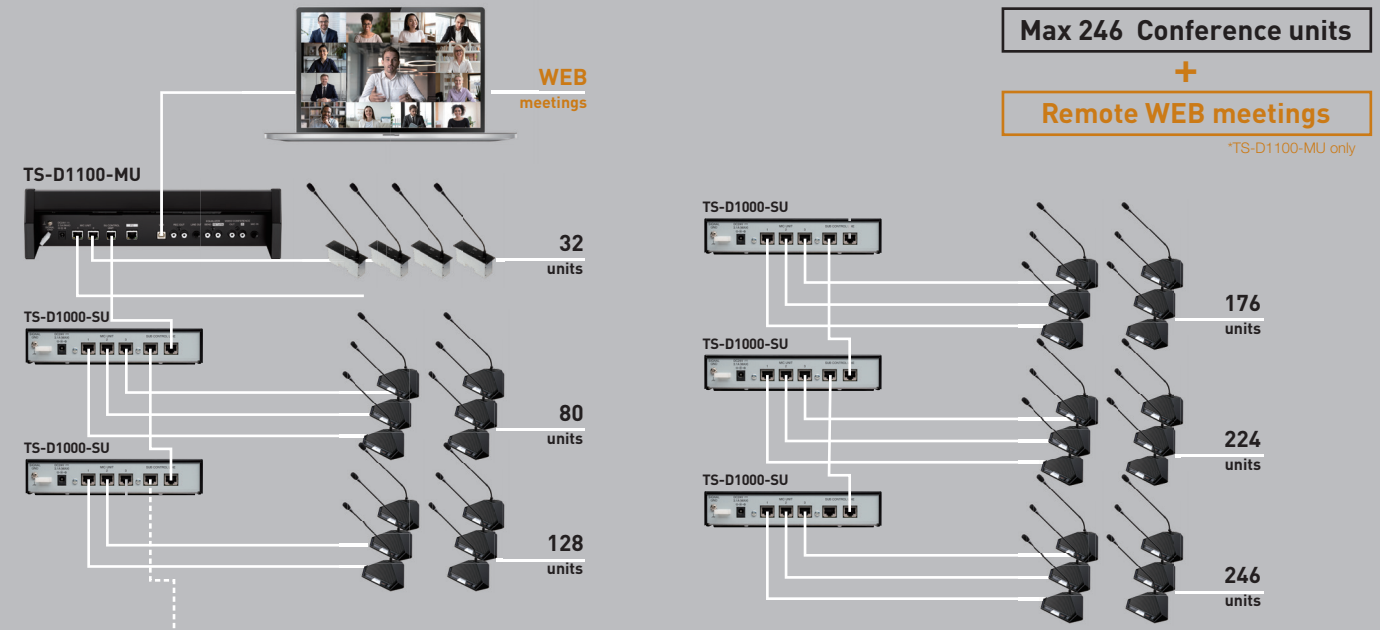
Connection to a PC enables audio input and output during Web meetings and conferences.



## Web Browser Application

Built-in web browser application is available. Advanced settings can be made from a PC or tablet.

# System Configuration



# Space-Saving System Configuration

**More Compact Size**

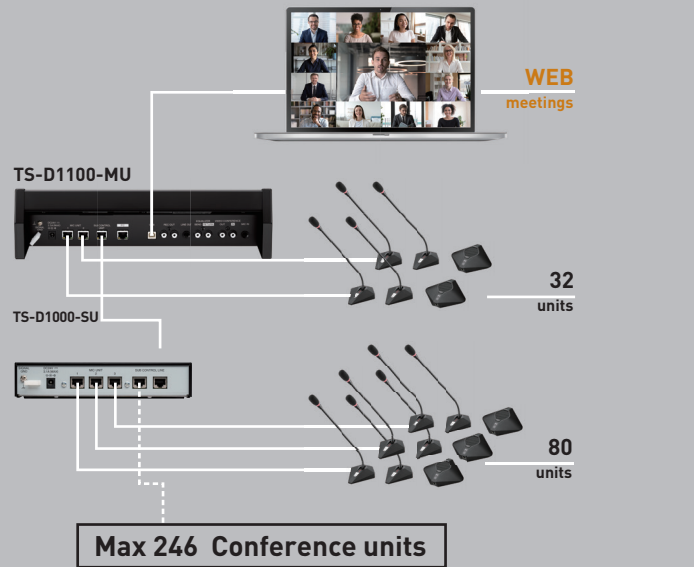
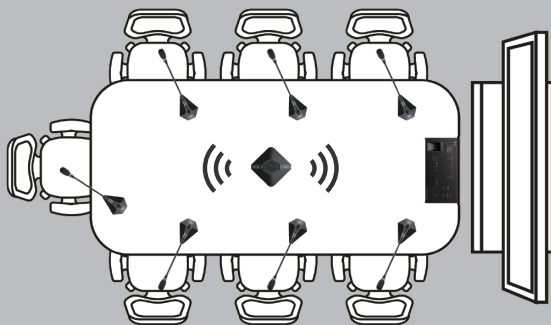
To build a more space-efficient conference system, we offer compact microphone units along with speaker units capable of covering a 6-meter-square conference room with a single device.

TS-D1100-MC

TS-D1100-SP

## Compact yet Powerful

Utilizing compact individual microphone units alongside a shared speaker unit allows for more efficient use of conference table space. Additionally, it supports connection of up to 246 conference units, catering to various meeting formats.



**TS-D1100-MU Master Control Unit**

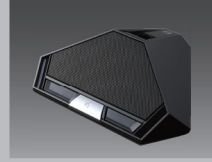
- USB Audio In/out (USB 2.0 type-B port)
- Supports up to 32 conference units
- Mic In, Aux In, Line Out, Rec Out, Headphone monitor out, EQ in/out
- Function setting : Number of open microphones, Auto mic-off function, Microphone priority selector
- Rack-mountable with optional MB-TS920 bracket

**TS-D1000-SU Sub Control Unit**

- Controls up to 48 Conference Units
- Up to 5 Sub Control Units connectable to the Master Control Unit with the supplied LAN cable.
- Only 22 conference units can be connected to the 5th Sub Control Unit

**TS-D1000-CU Chairman Unit**

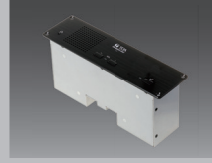
- Chairman unit for basic discussion
- Priority button
- 0.4W monitor speaker
- 2 headphone jacks with individual volume control
- PoE powered

**TS-D1000-DU Delegate Unit**

- Delegate unit for basic discussion
- 0.4W monitor speaker
- 2 headphone jacks with individual volume control
- PoE powered

**TS-D1000-CF Chairman Unit**

- Flush-mount Chairman unit for basic discussion
- Priority button
- 0.4W monitor speaker
- Volume control keys
- PoE powered

**TS-D1000-DF Delegate Unit**

- Flush-mount Delegate unit for basic discussion
- 0.4W monitor speaker
- Volume control keys
- PoE powered

**TS-D1000-M1 Microphone**

- Gooseneck microphone
- Unidirectional electret condenser microphone
- LED shows microphone status
- XLR-3-32 connector
- Sensitivity:-37 dB (1 kHz, 0 dB = 1 V / PA)
- Frequency response: 100 Hz - 13 kHz
- Length: 518 mm (1.7 ft)

**TS-D1000-M2 Microphone [Long]**

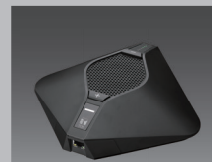
- Gooseneck microphone
- Unidirectional electret condenser microphone
- LED shows microphone status
- XLR-3-32 connector
- Sensitivity:-37 dB (1 kHz, 0 dB = 1 V / PA)
- Frequency response: 100 Hz - 13 kHz
- Length: 668 mm (2.19 ft)

**TS-D1000-M1S Microphone**

- Gooseneck microphone
- Unidirectional electret condenser microphone
- LED shows microphone status
- XLR-3-32 connector
- Sensitivity:-37 dB (1 kHz, 0 dB = 1 V / PA)
- Frequency response: 100 Hz - 13 kHz
- Length: 368 mm (1.2 ft)

**TS-D1100-MC Microphone Unit**

- Compact gooseneck microphone unit
- Unidirectional electret condenser microphone
- LED shows microphone status
- Sensitivity:-37 dB (1 kHz, 0 dB = 1 V / PA)
- Frequency response: 100 Hz - 13 kHz
- Length: 518 mm (1.7 ft)
- PoE powered

**TS-D1100-SP Speaker Unit**

- Speaker unit for basic discussion
- 1W monitor speaker
- Individual 6-level volume control
- PoE powered

**TS-D1000-EX Extension Unit**

- Provides up to 150m distance over Shielded CAT5e

**MB-TS920 Rack Mounting Bracket**

- For use with TS-D1100-MU

